

HUNTERS®

HERE TO GET *you* THERE



Helston Close

Stourbridge, DY8 5DA

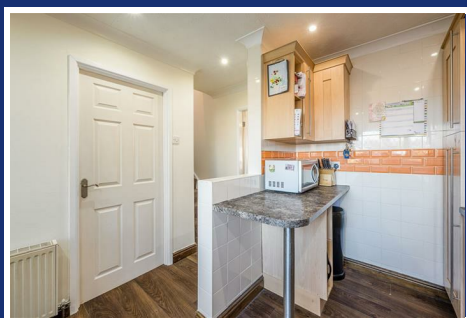
Offers Over £235,000



9 Helston Close

Stourbridge, DY8 5DA

Offers Over £235,000



Front of the Property

With a tarmacadam drive to front, gated side access, door to garage and double glazed door to front.

Entrance Porch

With a double glazed door to front, double glazed window to side and a door leading to the kitchen.

Kitchen

12'2" x 9'8" (3.72 x 2.95)

With a door leading from the porch, range of fitted wall and base units, worksurfaces over with tiled splash back, integrated oven with induction hob above, plumbing for washing machine, one and a half bowl stainless steel sink and drainer, door to garage, door to lounge, stairs to first floor landing, double glazed window to front, recessed spotlights and a central heating radiator.

Lounge / Dining Room

16'7" max x 16'6" max (5.07 max x 5.03 max)

With a door leading from the kitchen, gas fire, opening to dining area, double glazed window to rear, double glazed sliding door to garden and a central heating radiator.

Landing

With stairs leading from the kitchen, doors leading to various rooms, loft access and a double glazed window to side.

Bedroom One

13'1" x 8'11" (3.99 x 2.74)

With a door leading from the landing, double glazed window to rear and a central heating radiator.

Bedroom Two

10'2" x 8'3" (3.1 x 2.52)

With a door leading from the landing, double glazed window to rear and a central heating radiator.

Bedroom Three

9'3" x 7'10" (2.84 x 2.4)

With a door leading from the landing, opening to store, double glazed window to front and a central heating radiator.

Bathroom

6'4" x 6'11" (1.95 x 2.11)

With a door leading from the landing, part tiled walls, WC, wash hand basin, bath with shower over, double glazed window to front and a central heating radiator.

Garden

With a double glazed sliding door leading from the dining area, patio area, steps leading to lawn, outdoor tap and gated side access.

Garage

16'6" x 6'5" (5.04 x 1.96)

With a door leading from the kitchen, space for tall fridge freezer, space for tumble dryer, wall mounted boiler, window to side and door to front.



A map snippet from Google Maps showing a street intersection. Arundel Rd runs vertically on the left. Belle Vue runs horizontally across the top. Ashwood Ave runs diagonally from the bottom left towards the center. A red location pin is placed at the intersection of Arundel Rd and Belle Vue. The Google logo is in the bottom left, and 'Map data ©2025' is in the bottom right.

A satellite map view of a residential area. A yellow location pin is placed on a road. The text 'Lawnswood Rd' is visible at the top. The text 'King George V Park' is visible in green. The Google logo is partially visible at the bottom left.

GROUND FLOOR

1ST FLOOR

DINING AREA

LOUNGE

STAIRS

UP

GARAGE

KITCHEN

PORCH

BEDROOM 2

BEDROOM 1

LANDING

BATHROOM

STORAGE

STORAGE

BEDROOM 3

HUNTERS®

HERE TO GET you THERE

While every attempt has been made to ensure the accuracy of the floorplan contained here, measurements of doors, windows, rooms and any other items are approximate and no responsibility is taken for any error, omission or mis-statement. This plan is for illustrative purposes only and should be used as such by any prospective purchaser. The services, systems and appliances shown have not been tested and no guarantee as to their operability or efficiency can be given.

Made with Minimax C3005

Energy Efficiency Rating

Rating	Current	Potential
Very energy efficient - lower running costs		
(92 plus) A		
(81-91) B		
(69-80) C		
(55-68) D		
(39-54) E		
(21-38) F		
(1-20) G		
Not energy efficient - higher running costs		
Current		82
Potential	63	

Environmental Impact (CO₂) Rating

Rating	Current	Potential
Very environmentally friendly - lower CO ₂ emissions		
(92 plus) A		
(81-91) B		
(69-80) C		
(55-68) D		
(39-54) E		
(21-38) F		
(1-20) G		
Not environmentally friendly - higher CO ₂ emissions		
Current		
Potential		

11a St Johns Road, Stourbridge, DY8 1EJ
Tel: 01384 443331 Email: stourbridge@hunters.com <https://www.hunters.com>